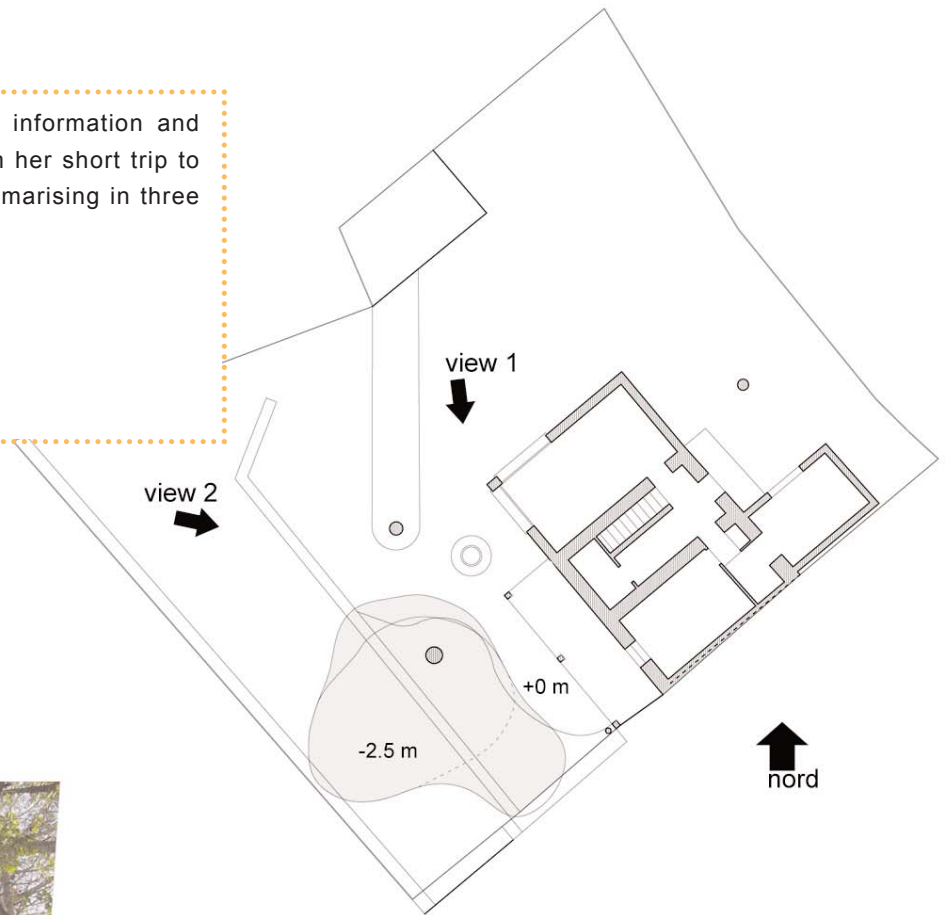


first of all we were analysing the information and images that Eva brought back from her short trip to Marseille, these data we were summarising in three fields:

- > **your needs**
- > **the site itself**
- > **the economy**



view 2



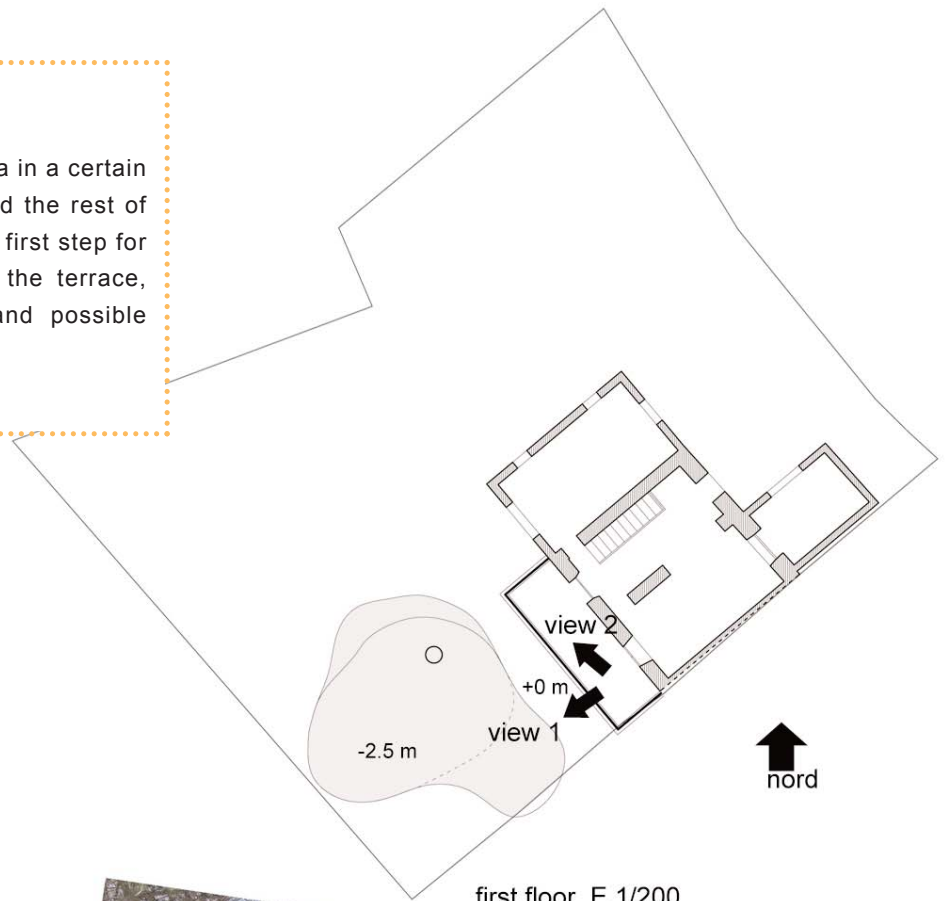
ground floor and site E 1/200

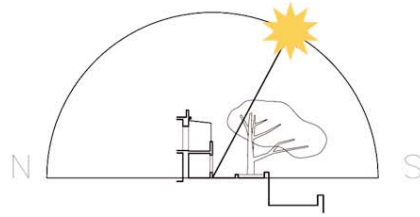
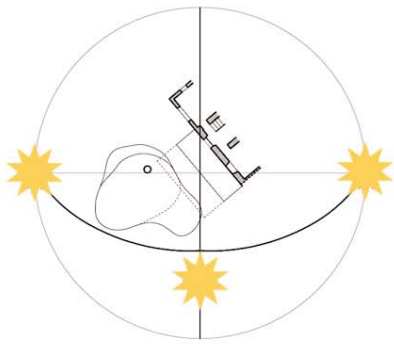
view 1



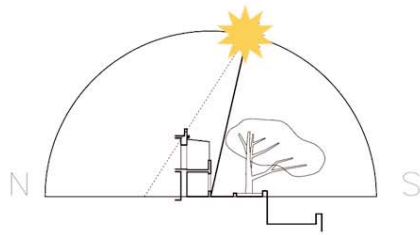
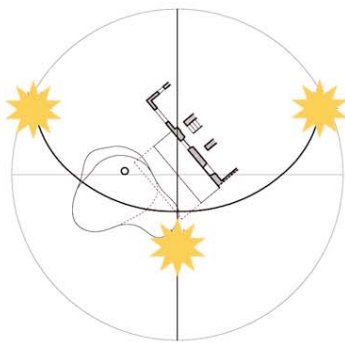
> your needs -

for expanding the existing veranda in a certain "dialog" with the big pine tree and the rest of your garden and to project it as a first step for a further upgrade (studio under the terrace, stairway to the lower terrace and possible extension to the other big tree)

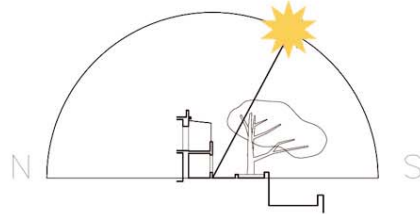
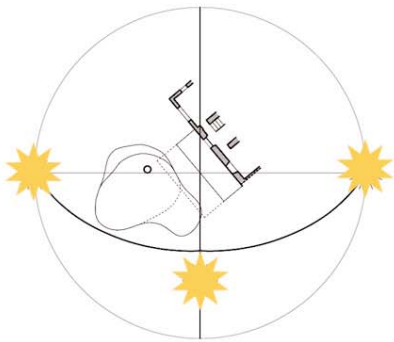




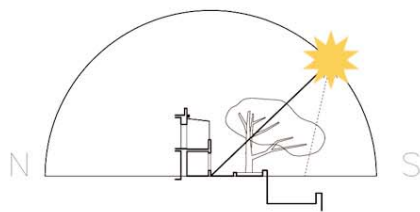
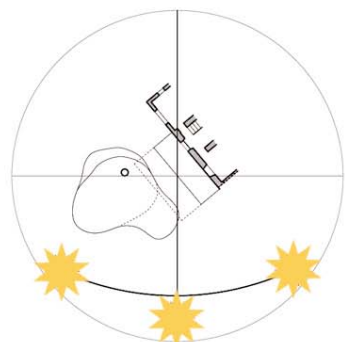
spring



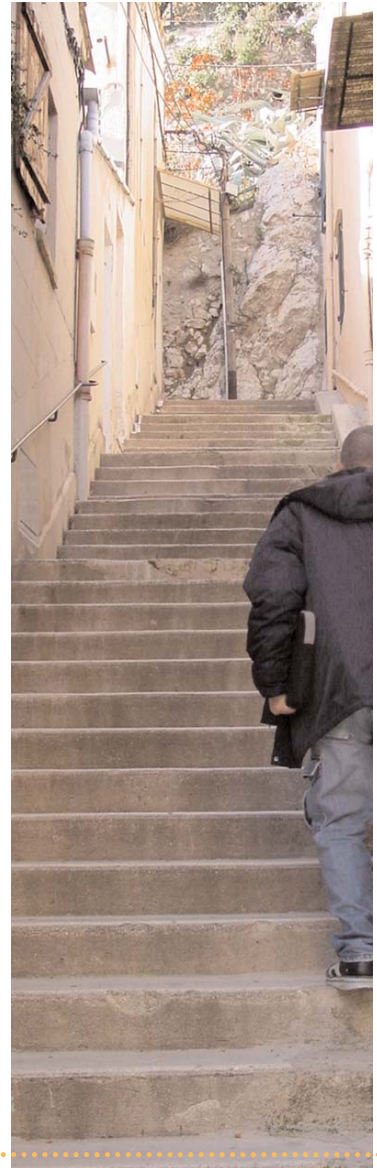
summer



autumn



winter



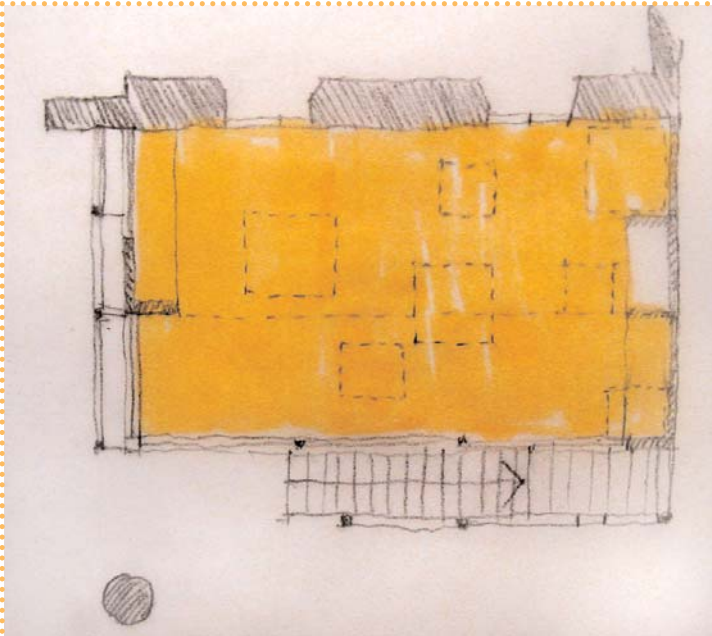
> the site itself -

its climate, winds, course of the sun and its extreme access to deliver the construction material.

> the economy -

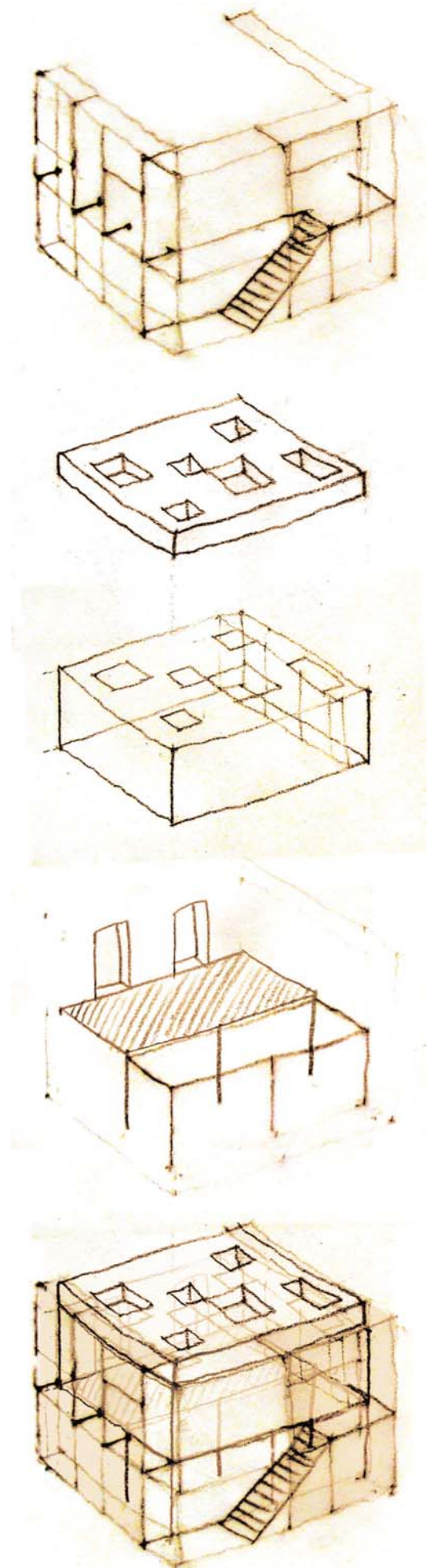
your wish that things should stay low cost.

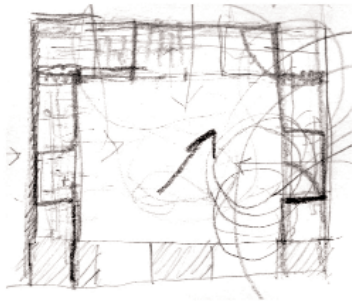
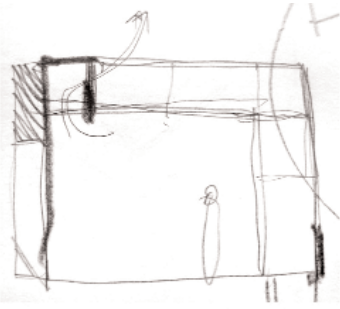
the idea of building a "physical dialog" with the tree, the extreme changes of the climate, the delicate access and the need to hold things cheap where first in such a strong contradiction that it took us quite a while to find a way to draw ideas which were respecting all these facts and wishes. but little by little they were more balanced.

**the box****interior****26 m2**

our first concept is trying to give pragmatic answers to all the questions these fields brought up. in this proposal we are duplicating the space volume, using the most simple geometric structure in order to build up on the existing one and providing structurally the possibility to extend the structure in the future (modular system), and of course to keep the costs as low as possible.

this proposal steps into a dialog with the big tree with a lot of respect. the structure doesn't touch him but on the contrary takes a step back and defines together with the tree and the stairway a new situation.

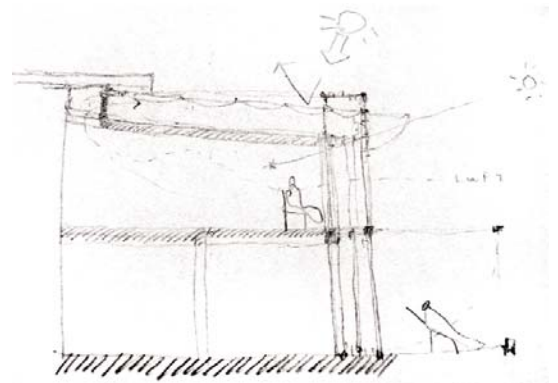
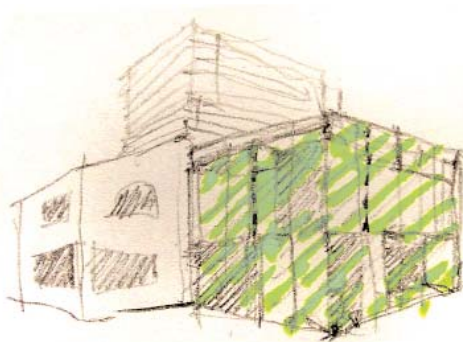




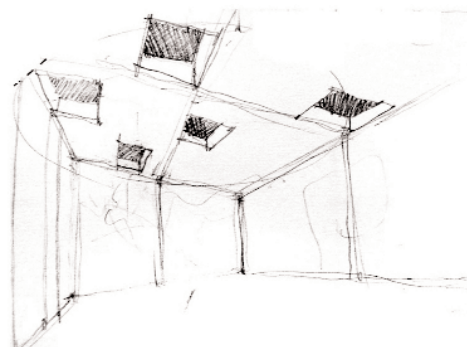
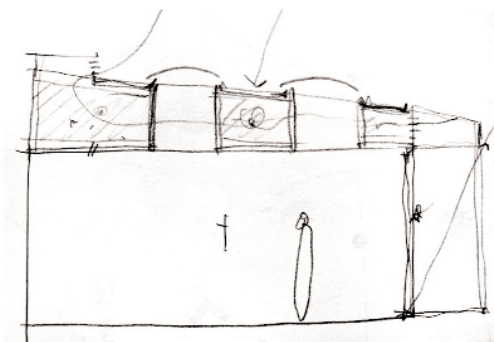
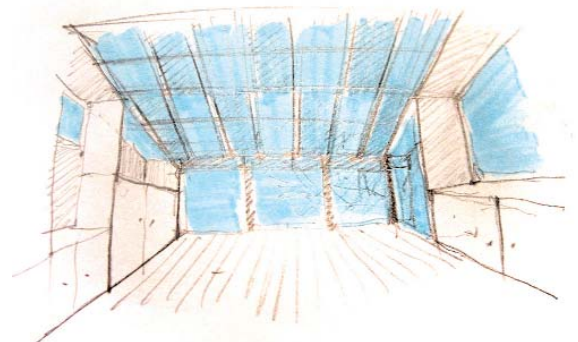
another basic idea/answer of the the box is the "double skin".

seen from inside we have first the glass facade respectively the polycarbonate panels (light, transparent, cheap) on the roof and then outside a second layer with semi-translucent materials which allow us to play and to control the direct sunlight and heat.

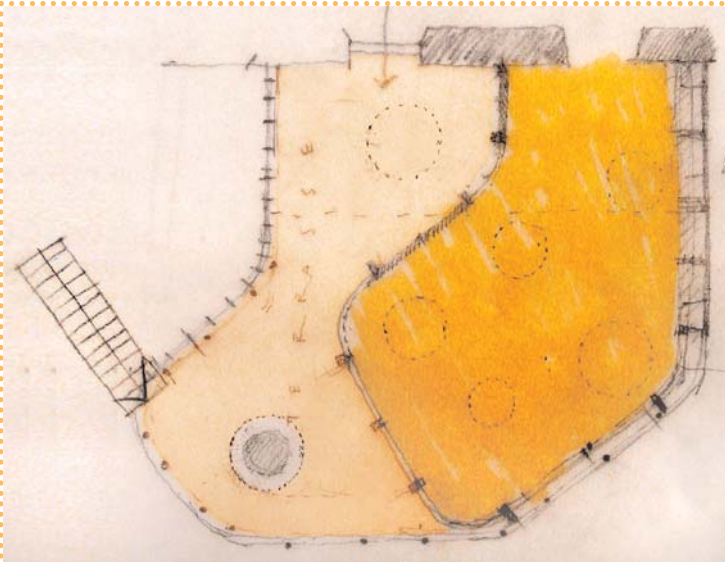
so there would be like two structures - a heavy wooden one for the construction, the floor, the windows and roof itself, and a light metal one for this second skin.



regarding **the roof** we were playing with two versions > a full-transparent and a partly transparent one. the full transparent version would require a shading system and because of the various strong winds some protection screens on both sides. the partly transparent system would consist in a ventilated double-ceiling in which there would be skylights mounted.



what we realized studying this first version is that your wish to make the rooftop of the veranda accessible complicates the whole building structure a lot: in terms of material, weight and money! thats why we continued to work without considering this wish. there can be a roof terrace but we would recommend to not structurally combine it with the veranda, but with the new sleepingroom..lets talk about it..



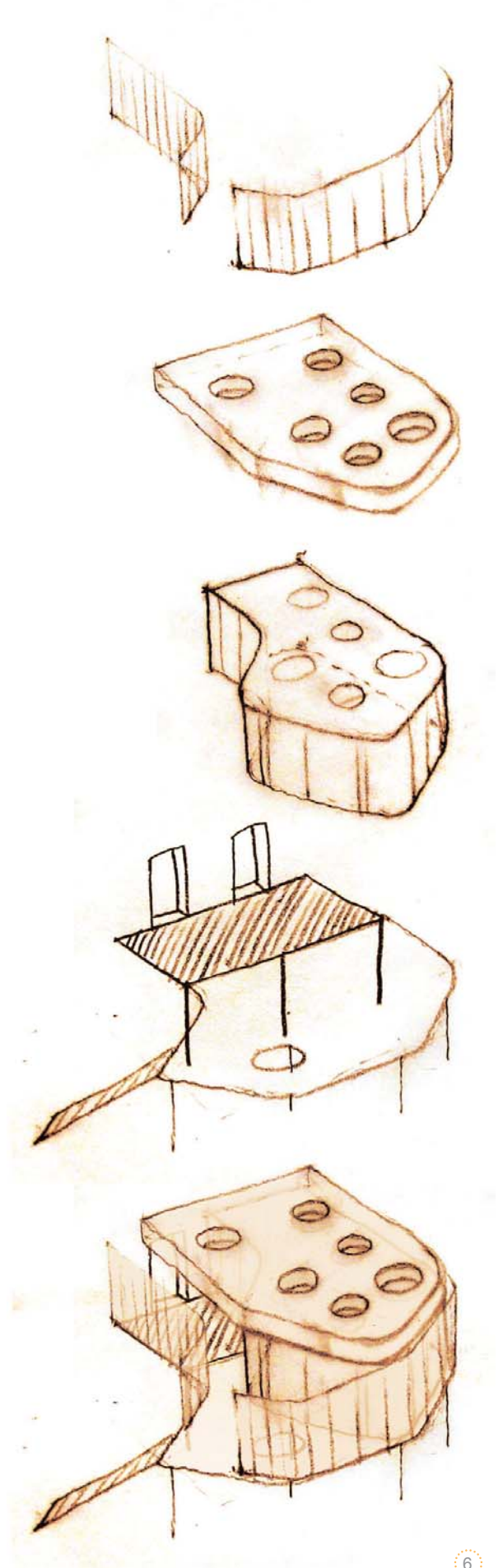
the piano

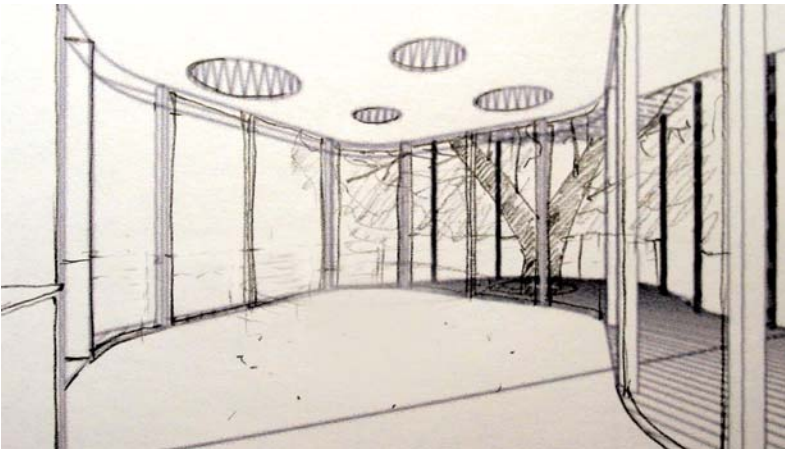
interior	23m ²
exterior	19m ²

our second proposal, the one we are actually working on and from which we are most convinced, is giving to almost all questions radical different answers.

the approach of this proposal comes also from the outside of the problem, from the whole surrounding and the protagonist tree. its "curving gestures" draws a "unifying difference" with the inside of the house and its angular structure, lets say it tries to be the formal in between the big tree and the house.

in contrary to *the box*, *the piano* wants to create not only more, but also **new spaces and situations**. keeping the idea of the "double skin" its structure is far more expressive, which provides more diferenciated transition spaces between inside and outside, playing with combinations between the two skins and relations with the big tree.





so the idea of the **two skins** remains, but in the formal solution of *the piano* it gets stronger, because it allows not only to control the climate, but also **to create spaces**.

beside the "organic hug" with the garden context *the piano* defines also new spaces itself by giving new significance to the **two existing door-connections** with the house. as you see we have now one door linked from inside to inside and one from inside the house directly to the outside of the veranda, potentiating again the play and life with the in-between-spaces.

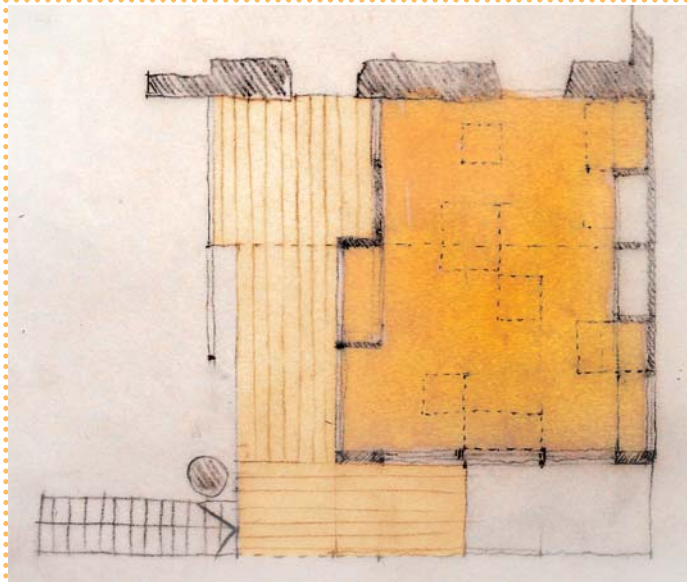
the piano structure is more complex indeed, but its complexity gives also more possibilities to animate its life. the idea to not only get very close to the tree but even to hug him seems to be more complicated as it is, but of course we have to cut some branches - over all the "Zoe-branch", but only from a certain height.



regarding the tree we found out that its a "problem" anyway (gives the most shadow in winter....see page 3) and to cut some branches just can improve the verandas climate.

materials:

like in *the box* we would work with two structures - the heavy one out of wood, the fine one for the second skin resp. the shading system out of metal. these two structures and their relation have to be technically studied very well in case that you want to immerse this proposal. we'd love too and we know it can work well!

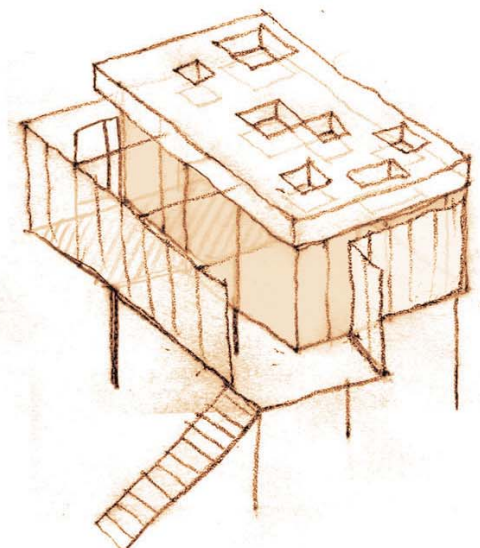
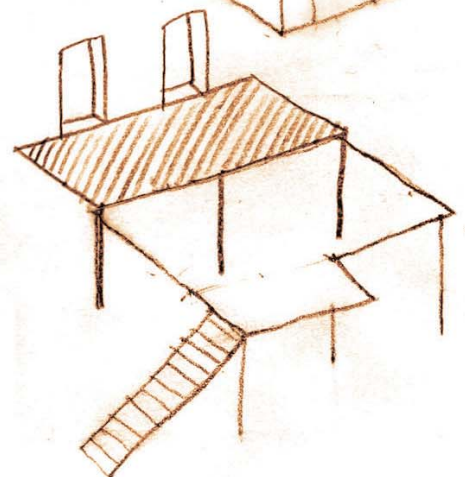
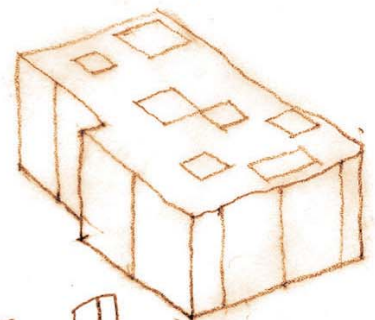
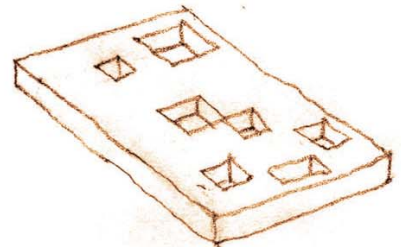
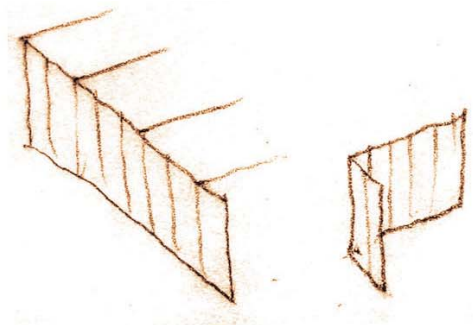


the suitcase **interior** **21m²**
 exterior **16m²**

our third proposal can be read as a combination of the box and the piano.

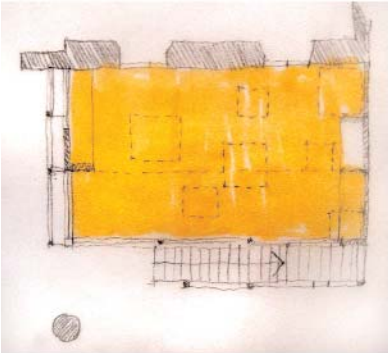
we propose it because it forms a compromise between the rational and the radical.. and also an economical - in between way.

we made this study also because we wanted to see if it works.. we think it does, but of course by loosing the "curving gestures" we are also loosing a certain "ludic promotion".. we also imagine that the parties end earlier..

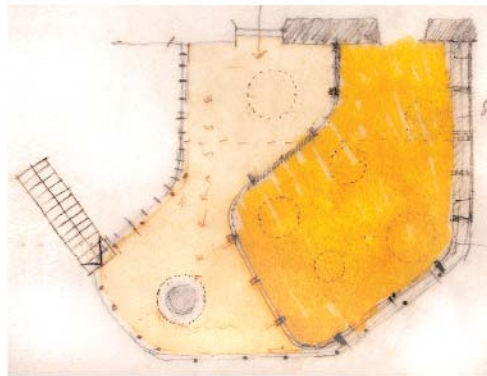


at the moment we are working on *the piano* version as for us it's the most interesting and appealing one. sexy not only in the contra point it marks in contrast to the already existing house parts but also as an image. so before continuing working we wanted to know your opinion and preferences regarding this 3 proposals as we would like to proceed to develop the project in a more dialogical way with you.

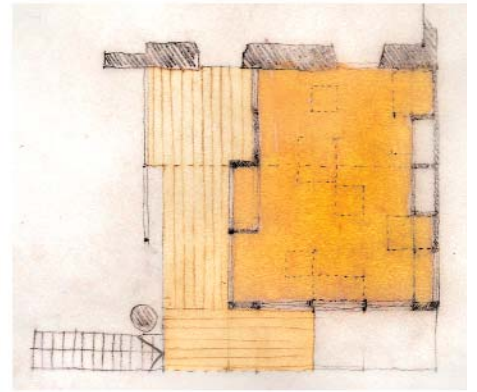
beside the formal difference between the proposals there is also a timing and economic one.



the box



the piano



the suitcase

timetable

the final plans for

the box could be finished by beginning of march

the piano by beginning of april

the suitcase by beginning of april too

economy

regarding the building costs we are trying to get cost estimates for the different versions, but we'll have to wait until next week and we wanted to first also know which direction you prefer.

what is sure that the box is less expensive than the other two, not only because of the simplicity of the solution but also because there are less square meters.

regarding our work we estimate that to develop the plans for *the box* would cost around 2'000.- €, *the piano* 3'000.- € and *the suitcase* 2'500.- €.

of which 500.- € you already paid.

hope you enjoy what you see and we're really looking forward to your feedbacks and how the cap develops....