

the second phase in working on the cap canaveral project started with two questions and one goal :

> couldn't both doors lead to the roofed piano?

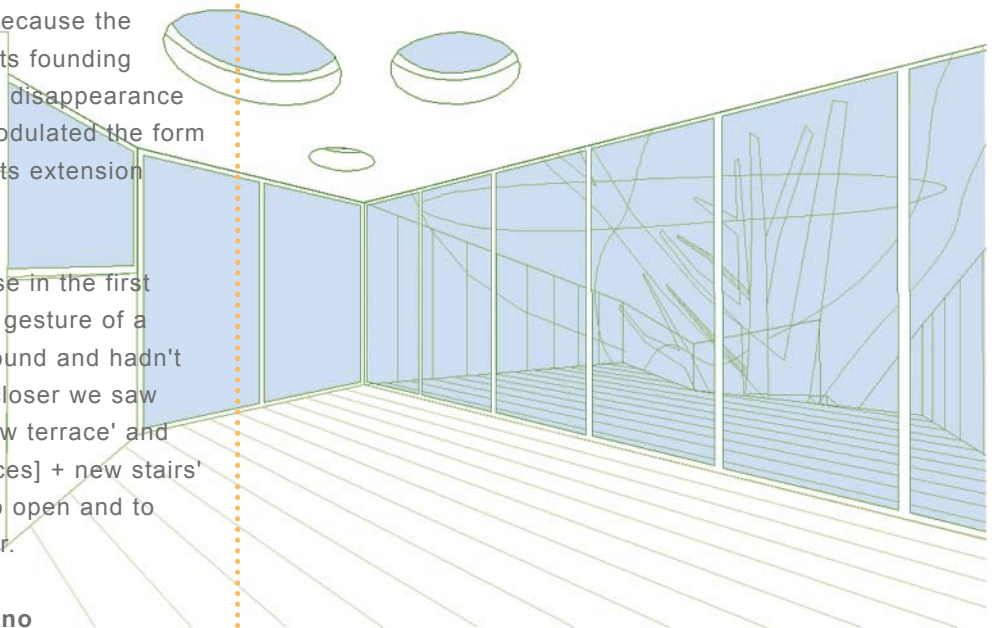
< what is the aspect and the connection of the staircase in and to the garden?

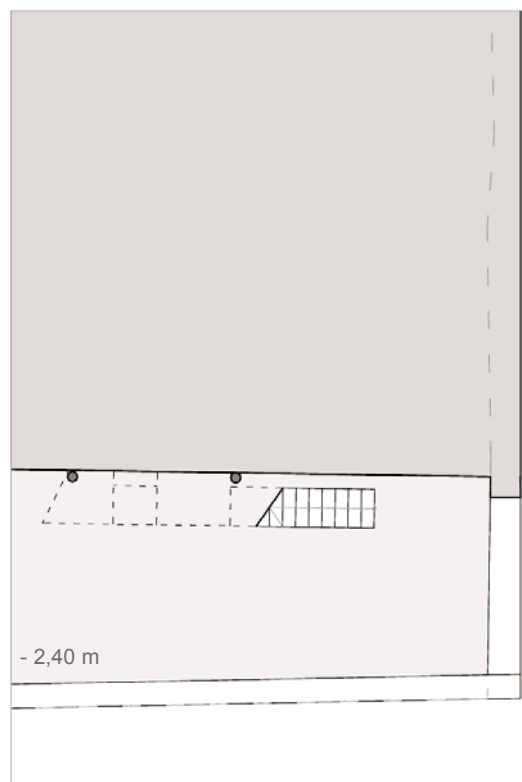
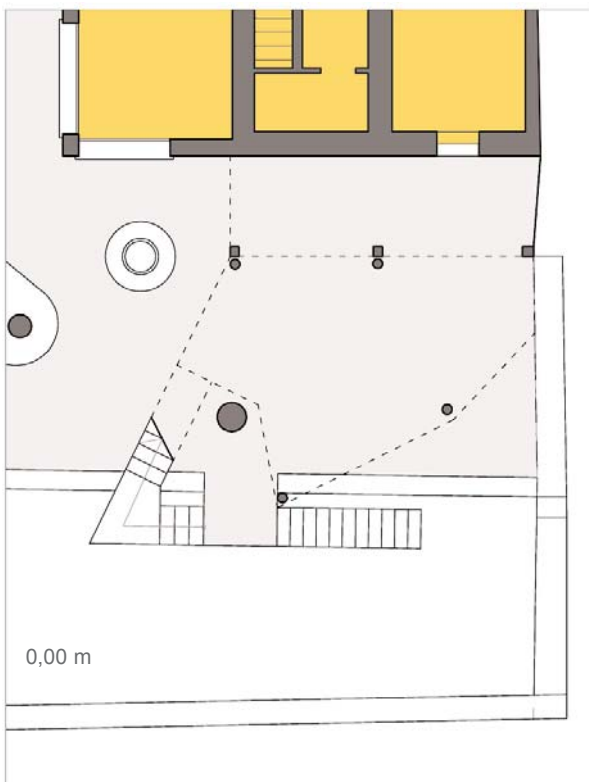
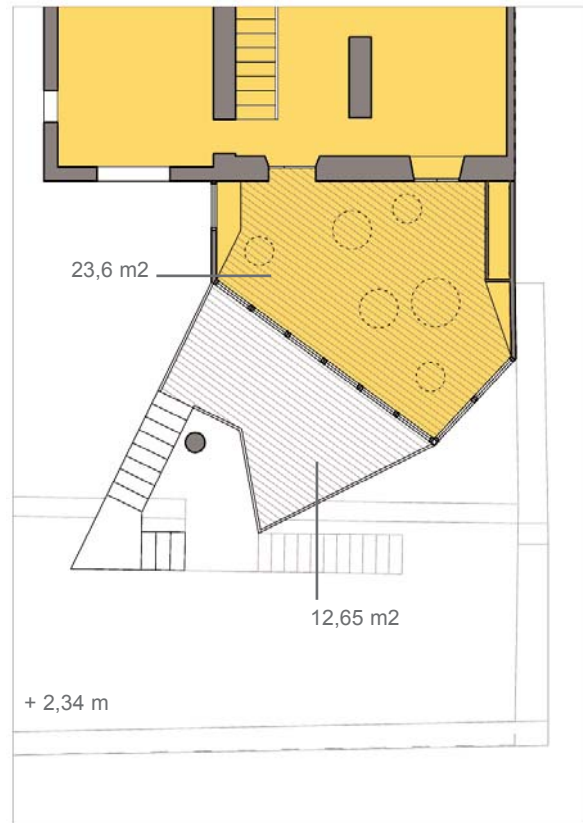
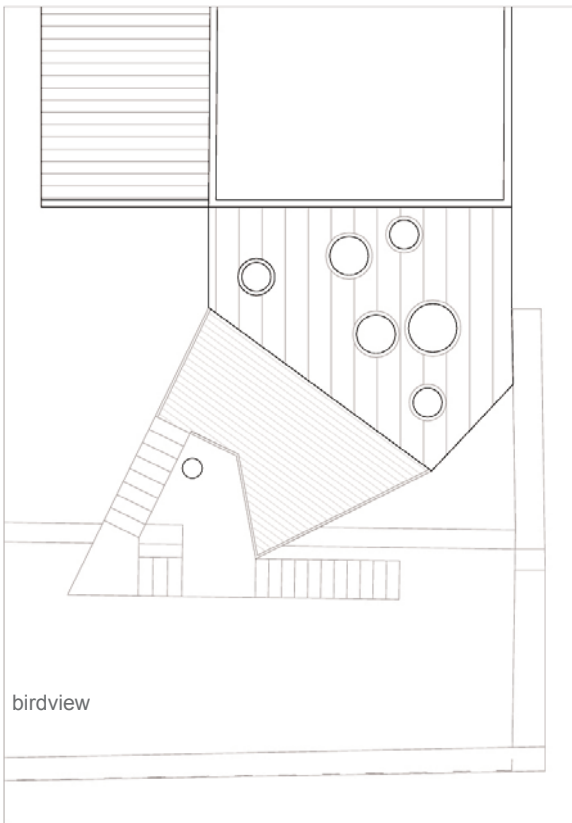
- our goal was to give the first idea of the piano a contextual support and a structural logic.

> by bringing both doors back into the course of motions of the new roofed terrace the idea of the space in between disappeared, because the concept of the 'double skin' lost its founding energy. as a consequence of this disappearance the 'tree concept' evolved and modulated the form and movement of the piano and its extension towards the garden.

< was a good question! the staircase in the first piano mailing was an almost shy gesture of a slim leg stepping down to the ground and hadn't any structural logic yet. looking closer we saw that the pair 'existing house + new terrace' and 'existing stairs'[tree, gardenterraces] + new stairs' should be much more related - to open and to combine one space with the other.

the second mailing shows **the piano transformed into the bird.**





our intentions were to contextualise the new structure as much as possible with your wishes and the sites specific characteristics and problems. this makes the bird flying around the tree and let him create four levels before landing as the new terrace.

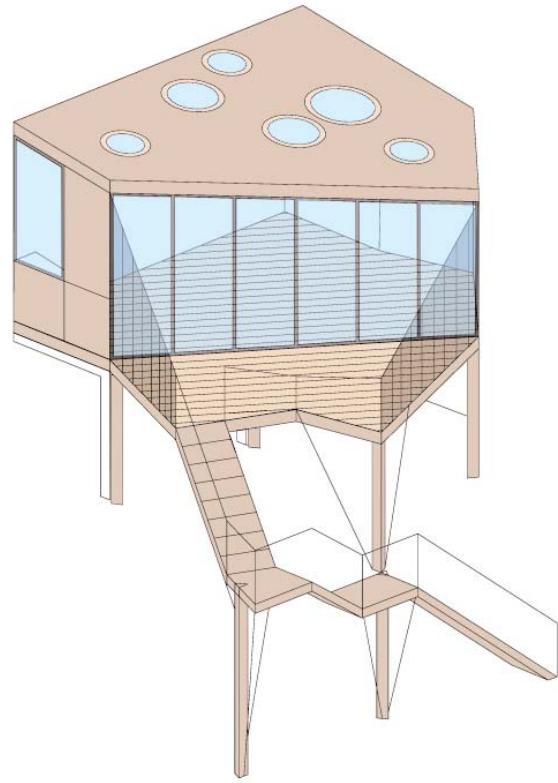
structurally we intended to find a solution which needs a minimum of pillars on the first gartenterrace. to facilitate the movements in the new space which we're creating bellow the bird.

In order to avoid two problems: to put foundations near to the roots of the tree, and to mount new weights close to the 1st garden terrace' border, this is why two pillars of the new terrace structure run down to the 2nd garden terrace.

our structural reflections on the whole situation also made that the curves of the piano disappeared - they had no structural/contextual sense anymore.

the birds flight - the staircase - connects and creates the four garden levels, flying in a spiral around the tree. on the first level it creates a new access to the abandoned lower terrace, on the second one it defines a platform which connects the upper terrace, on the third level it creates a new kind of lookout point and on the fourth one it opens up to the 'tree-house-forecourt' of the new terrace.

out the egg of the piano hatched a birdyctecture which is the approach of the house to the tree.. till arriving to the garden. and coming from there. . . . the bird .



skylights - some to open

south windows > sun and landscape

tree window-facade > 100% to open (system "accordion") - connection in/out-side

sofawindow > northwest readinglight..

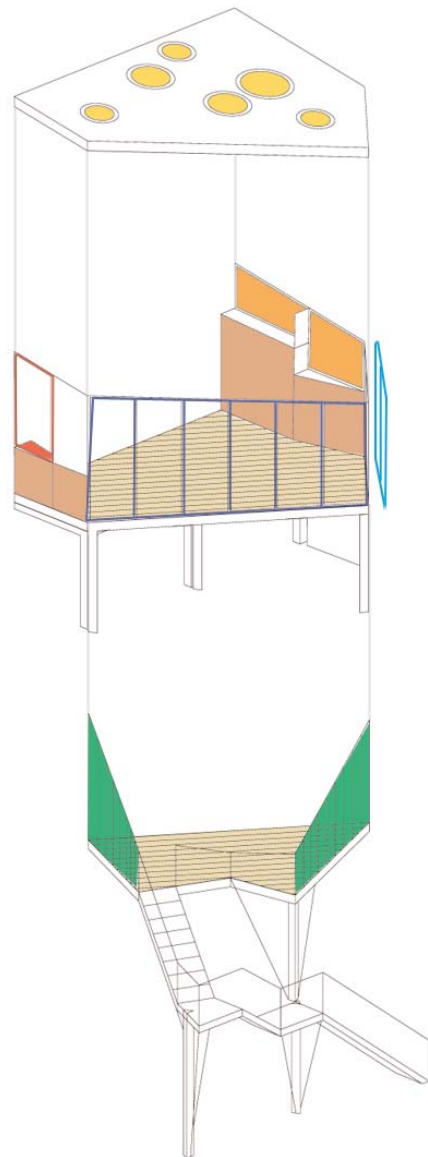
cupboards > to store stuff\*

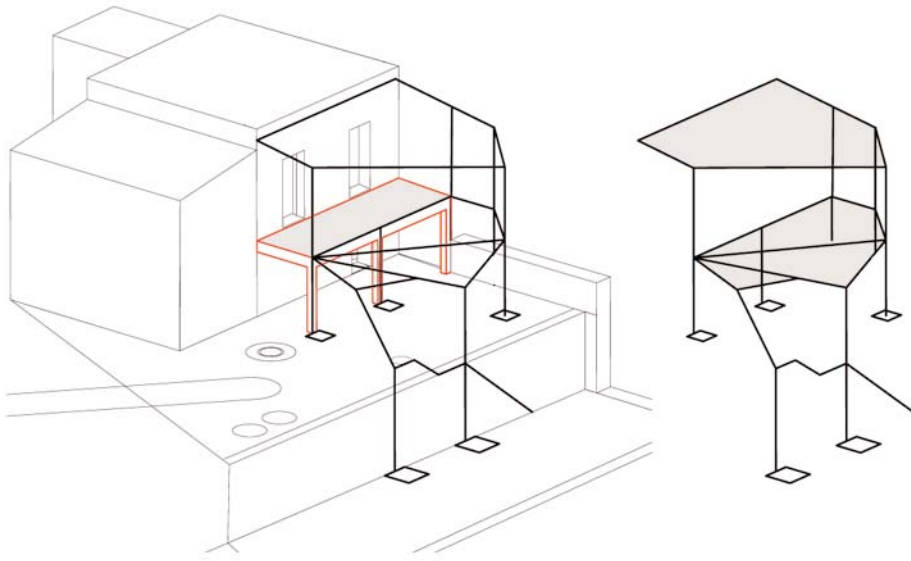
above-windows > no direct neighbour views, morningsun

floor > same wood continues in/outside

side panels > mobile for wind and/or sun protection

\* for special events, such as dance parties, using it as a short time bedroom for your happy visits from spain, etc. we would recommend to also build some "smart furniture", like for instance a huge table, which also can be folded, and even disappear in a wardrobe, etc.





### structure

because of the spatial circumstances, to avoid communication problems with french companies, to keep the budget low and to enable the set up as easy as possible, we are proposing to realize the whole structure with steel and then cover floors, walls and the roof with wood, glass and other materials.

this way we can plan and calculate everything here and any professional firm in Marseille can prepare the pieces.

let us concretize all the other materials in the next steps, when we agreed on this basic material-question.

